



TECHNICAL SPECIFICATION

THE CUBE



CONTENT

GENERAL INFORMATION	3-5
THE BLACK BOX	6
POWER	7
SOUND	8
LIGHTS	9-10
RIGGING	11
VIDEO PROJECTION	12
APPENDDIX 1-5	
OVERVIEW PLAN	I
LIGHTING PLOT	II
LIGHTING PATCH	III
RIGGING PLAN	IV
LOAD TABLE	V



GENERAL INFORMATION

Please observe that all technical requirements need to be agreed upon in advance with our technical coordinator. Some of the technical equipment is shared between The Cube and the Concert Hall

The Cube (Swedish name Kuben) is a black box theater. It is centrally located in the Malmö Live building complex, between the concert hall and the Clarion hotel, on the second floor. Please refer to appendix for the overview plan.

ORG NR
556003-7482

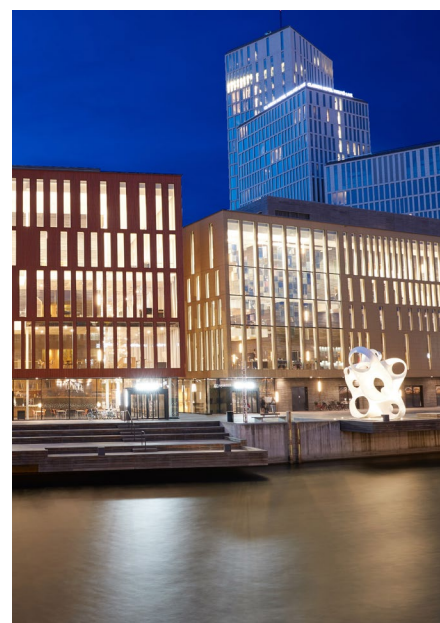
ADDRESS

Load in: Beringsgatan 1-3, 211 18 MALMÖ
Visitors: Dag Hammarskjölds torg 4, 211 18 MALMÖ
Post: Malmö Live Konserthus, 205 80 MALMÖ
GPS: 55.607817, 12.993672

WIFI

Connect to the SSID "City of Malmö"
Follow the onscreen instructions.

On some devices you may have to open up a web browser to be able to get to the portal.





GENERAL INFORMATION

LOADING DOCK

The loading dock for The Cube is the same as for the main stage and the Clarion hotel and congress. It is located on the ground floor to the right of the main stage. Equipment is transported to the second floor by the freight elevator described below. The dock has room for two trailers. Park the truck with the front towards the street.

Availability of the loading area must be determined before arrival due to its busy use.

DIMENSIONS

Clearance: 4,2 m

Length and width Lane 1: 18,7m x 4m

Length and width Lane 2: 17,6m x 4m

Clearance and width Gateway; 4,2m x 4m

Height Loading Bay: 0,8m

POWER

3x 63A for tour bus convenience.

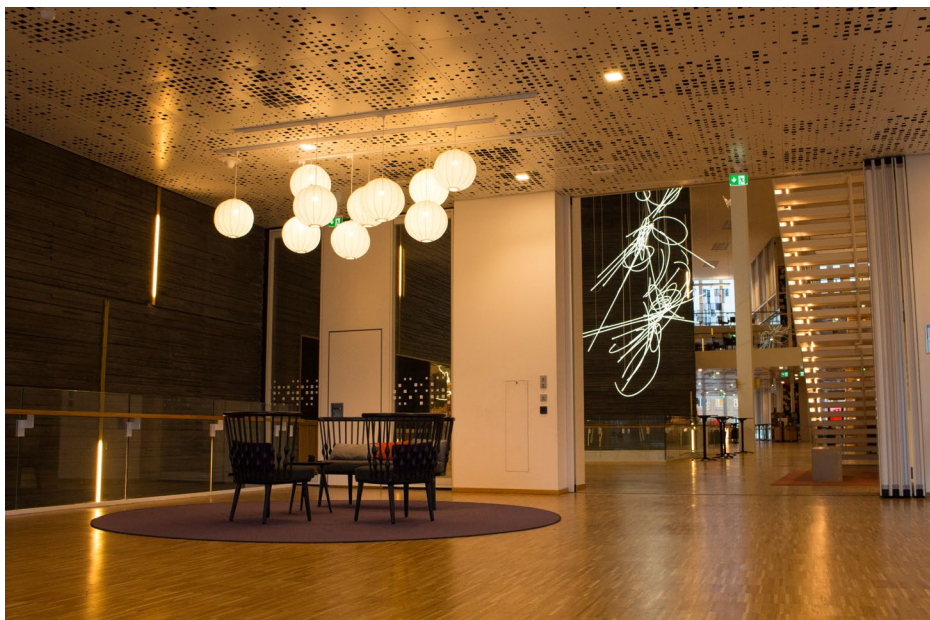
ELEVATORS

A 1930 kg max load freight elevator, 3 x 2 x 2,30m, serves from the loading bay down to the basement and up to the third floor. In the backstage corridor there is one passenger elevator with access from the basement to the sixth floor.

- W x D x H: 3 x 2 x 2,30m
- Max load: 1930kg

LOAD IN (DOORWAY)

Clearance: W 1,7m x H 2,1m



GENERAL INFORMATION

COMMON AREAS

Common Areas are public spaces located between the Concert hall, the Clarion Congress hall and the Cube black box. They are shared with the Clarion Hotel and Congress. Visitors, exhibition stands and other installations related to the Congress are likely to be present.

DRESSING ROOMS

Requests have to be agreed in advance with our production manager

HOTEL

Clarion Hotel Malmö Live

Address: Dag Hammarskjölds torg 2, 211 18 Malmö

Phone: +46 40-20 75 00

www.nordicchoicehotels.se/clarion/clarion-hotel-congress-malmo-live/

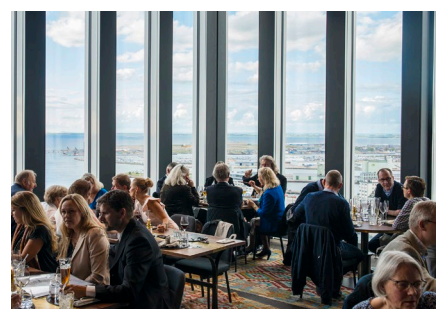
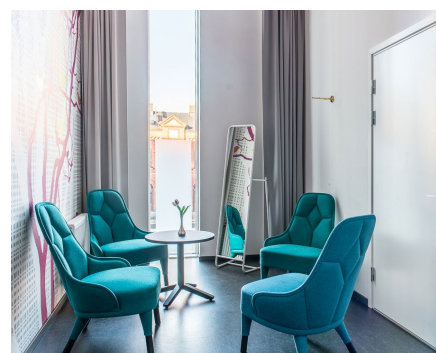
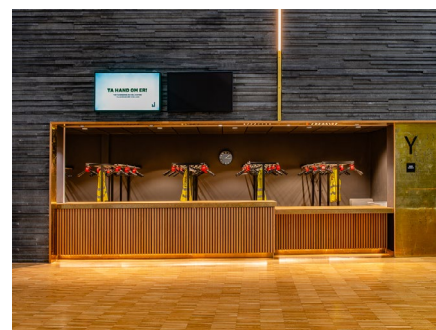
RESTAURANT

Kitchen & Table +46 40-20 75 02

malmö@kitchenandtable.se

Eatery Social Taqueria +46 40-20 75 37

malmö@eaterysocial.se





THE BLACK BOX

Please refer to appendix for plan.

DIMENSIONS

- W x D x H: 19m x 22m x 13m

CLEARANCE

- Ceiling: 13m
- Hoist beams: 12m
- Catwalks: 7m

FLOOR

The stage floor is made of dark oak wood.

- Floor weight limit: 500kg/m² (approx:100lb/ft²)

SEATING

The Cube has an extendible and mobile auditorium stand. It is divided in two parts and has all in all 202 upholstered seats on 9 levels.

- W x D: 15m x 9m
- 202 seats

There are 150 chairs and 25 round tables for furnishing of the auditorium.

- 150 chairs
- 25 Tables

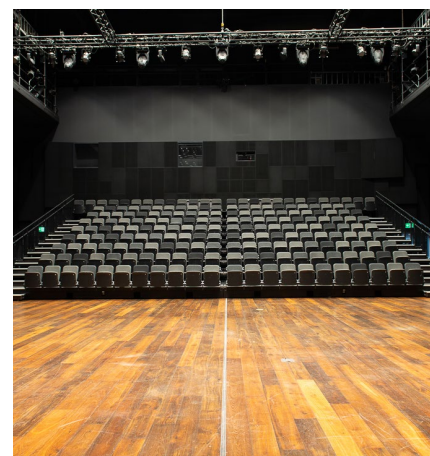
RISERS

A raised stage can be built with 2 x 1m risers in heights of 20, 40, 60, 80, 120 cm. Suitable max size is 12 x 8m.

- 60 Risers 2 x 1m

ACOUSTICS

Motorized curtains are installed in the ceiling for damping the sound when needed. Walls are constructed in a combination of wood panels and sound absorbers. There are 8 heavy mobile wood panel frames, four on each long side, 1,1m x 3,4m, for modifying reflection of sound and shape of the room.





POWER

Power outlets for external dimmers and such are located on the long side floor level and on the short end lofts.

- 4 CEE 3x63A
- 6 CEE 3x32A
- 12 CEE 3x16A

Power outlets for sound equipment are located on the short side floor level. All specific sound power outlets are in green colour.

- 1 CEE 3x63A (green)

230V, 10A green Schuko jacks for backline and audio equipment are available in several locations throughout the room.

FOH

FOH may be at a variety of locations. Power, patch for sound, light, video, ethernet and the house lights control is distributed throughout the room. Commonly the FOH is placed in the back of the auditorium stand.



SOUND

MIXING CONSOLE FOH

- Yamaha CL5 / Yamaha QL5
- Stagebox: 2 x RIO 3224-D 64 in/32 out. 16 AES out.

PA SYSTEM

- 3 x D&B Vi12 and 1x D&B Vi8 per side
- 2 x D&B V Subs per side on stage floor.
- 2 x D&B T10 (Frontfills)

PA SYSTEM SETUP

- FULLRANGE
- PA - SUBS
- PA - FRONTFILLS - SUBS

PA access via ANALOG from behind stage

MONITORS

- D&B MAX2 (2-Way passive 15" / 1.4" coax floor wedge) with d&b amps
- EM Acoustics EPX8 (active 8" coax floor wedge)
- EM Acoustics MSE 159SP / HALO CSC (suitable for S-fills)

WIRELESS

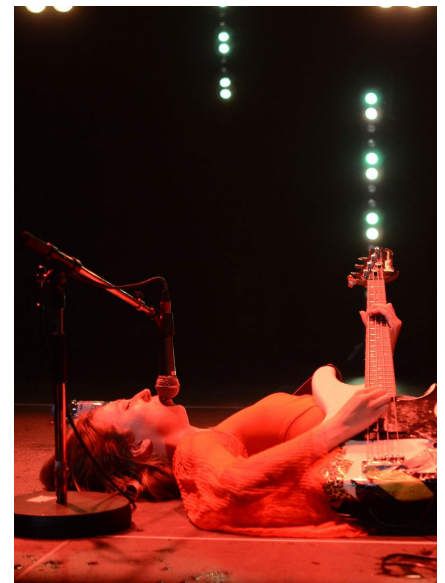
SONY DIGITAL WIRELESS SYSTEM

- DWM-02 handmics with DPA / Shure capsels
- DWP-B01 beltacks with DPA headmics

SHURE PSM1000 IEM SYSTEM

- Shure P10R Beltacks with Shure 535 headphones

Both digital and analog patch panels are located offstage left and FOH.





LIGHTS

Please refer to appendix for lighting plot and detailed DMX patch.

LIGHTING CONSOLE

- GrandMa 2 Light, Silent.

NETWORK PROTOCOL

- Streaming ACN, sACN.

DMX512 is transmitted in a sACN network and accessed through ETC Gateways. The light network RJ45 data sockets are mounted in plug-in boxes distributed throughout the black box and labeled NE(nnn).

DMX UNIVERSES

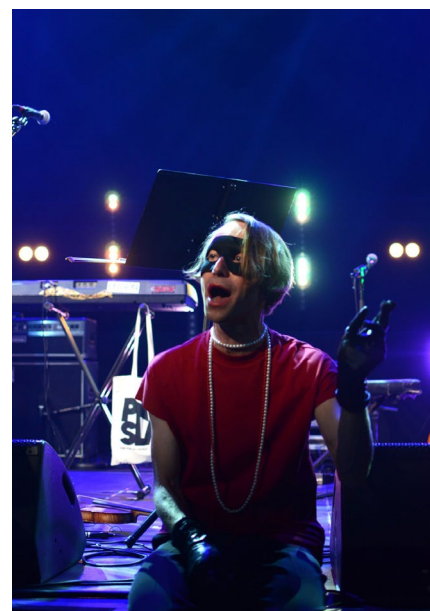
- Universe 1 Dimmers
- Universe 3, 4, 6: Moving Lights
- Universe 5: LEDPar
- Universe 11: House Lights

DIMMERS

- 3 x ETC Sensor 3 Power Control System with Thru Power Modules.

Dimmer rack location is on the second floor of the cube. Dimmer channels are distributed throughout the room to plug-in boxes of various configurations. Socapex cables drop from the catwalks to power the lighting rig.

- 214 x dimmer channels 2,3 kW





LIGHTS

FIXTURES

- 8x Clay Paky Aleda B-EYE K20, LED Washes
- 8x Clay Paky Alpha Spot QWO 800 ST, Spots
- 16x ETC S4 zoom profile, 15°-30°, 750W
- 34x ETC S4 Par, 575W
- 8x LSM Indigo 6000XE
- 20x Stairville LEDPar 64 short nose
- 5x Robe DL4S Profile

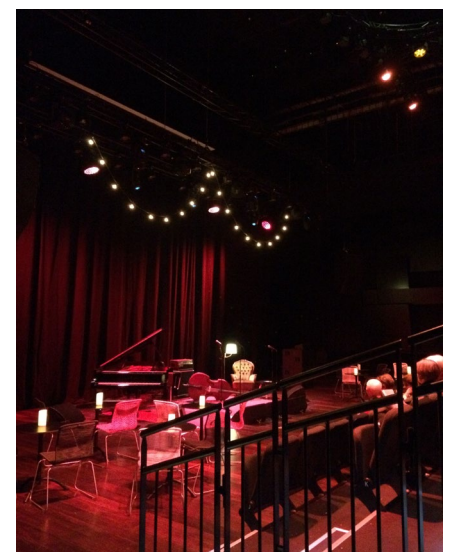
FOLLOW SPOTS

- Robert Juliat Super Korrigan 1200W

HOUSE LIGHTS

The house lights are controlled from the lighting console or from a separate panel.

Please note that the LED strips in the stairs of the auditorium stand are to be left on during concert.





RIGGING

Please refer to appendix.

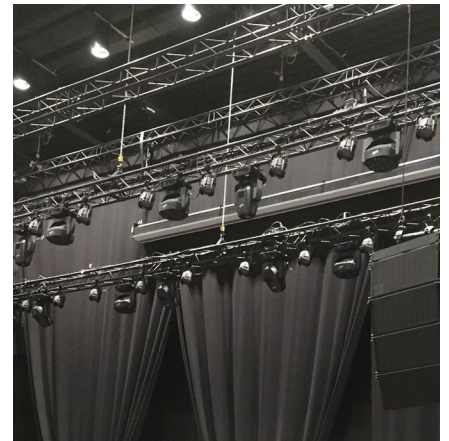
The lighting, projection screen, and PA are mounted in 300mm, square, black aluminum Hofkon heavy duty truss with the lengths of 12m.

- Truss: Hofkon 290400-4 HD

The trusses are hung in a point hoist system consisting of 15 Chainmaster hoists with a max lifting capacity of 500 kg each. The remote controlled hoists run along three steel beams.

- Hoists: Chainmaster, 500kg

The catwalks along the longsides provide rigging possibilities for lighting, drops and the like. Please discuss rigging matters with the technical coordinator in advance.





VIDEO PROJECTION

The projector is located in a soundproof booth on the second floor of The Cube. Distance to the projection screen is adjustable but commonly the full length of the room, 22m. The video signal goes through an optic fiber net with sockets in many places. The video patch is located on the second floor opposite to the projector.

PROJECTOR

- ▶ Panasonic PT-DZ770
- ▶ Brightness: 7000 lm
- ▶ Resolution: 1920 x 1200 px

LENS

- ▶ ET-D75LE30 (2:4 - 4.7:1)

VIDEO STREAM DISTRIBUTION

Transmitter

- ▶ Crestron DM-TX-201-S

Receiver

- ▶ Crestron DM-RMC-Scaler-S

Media Switcher

- ▶ Crestron DM-MD8X8-RPS

Fiber

- ▶ Neutrik opticalCon Advanced Duo MultiMode. NK02M-A-0-(nn)

SCREEN

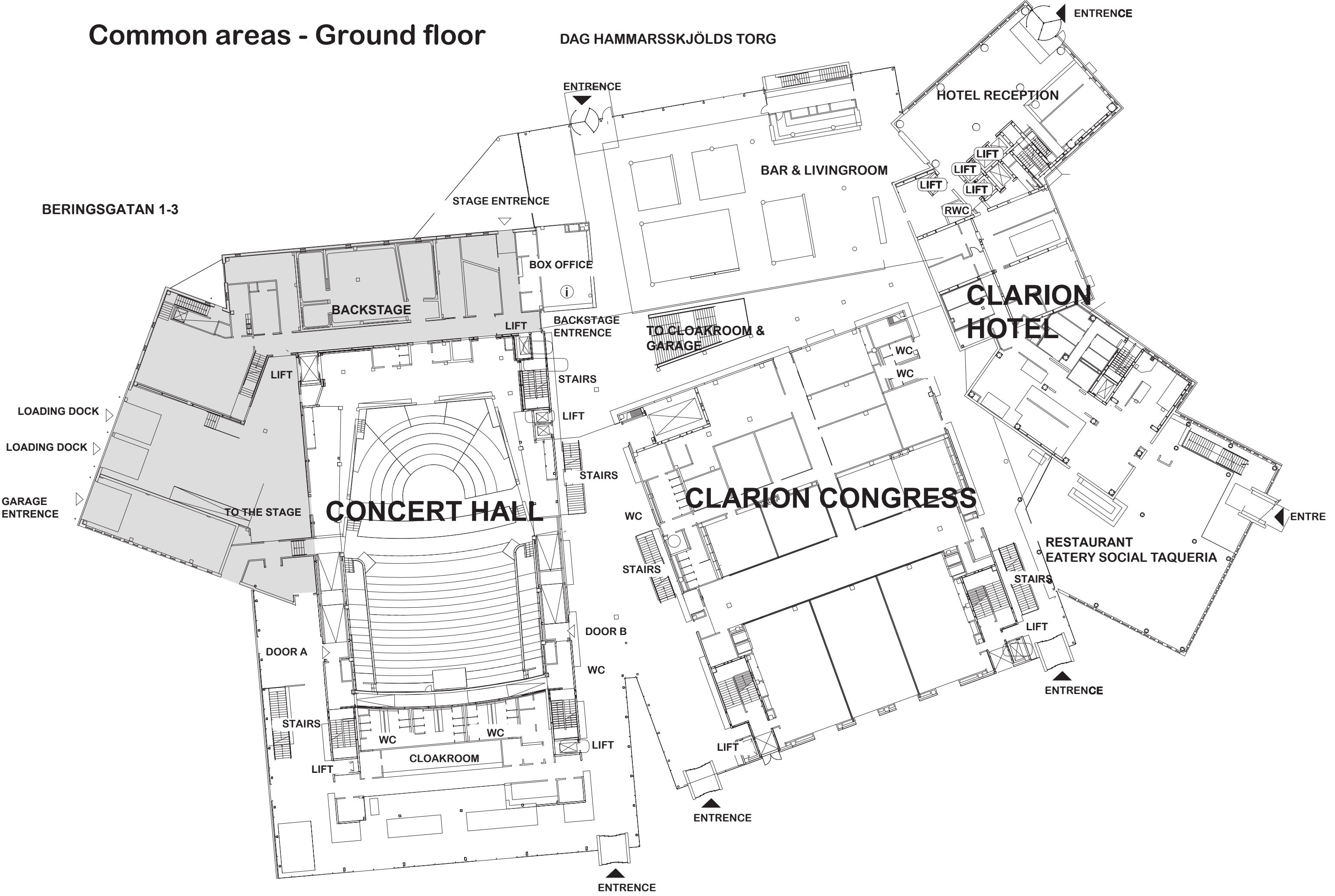
- ▶ W x H: 4,5 x 2,55m

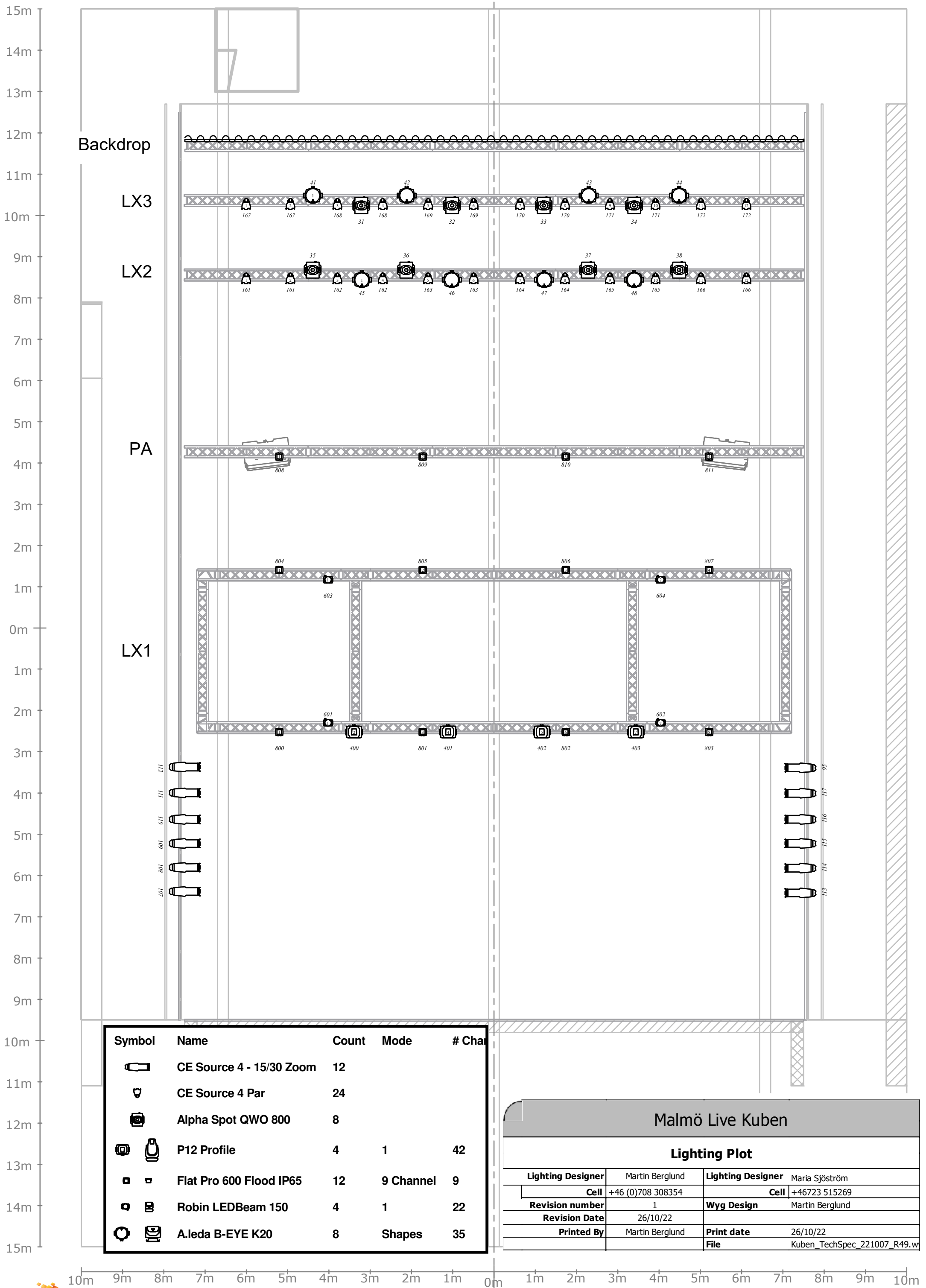


Common areas - Ground floor

DAG HAMMARSSKJÖLDS TORG

BERINGSGATAN 1-3





Symbol	Name	Count	Mode	# Chan
	CE Source 4 - 15/30 Zoom	12		
	CE Source 4 Par	24		
	Alpha Spot QWO 800	8		
	P12 Profile	4	1	42
	Flat Pro 600 Flood IP65	12	9 Channel	9
	Robin LEDBeam 150	4	1	22
	A.leda B-EYE K20	8	Shapes	35

Malmö Live Kuben			
Lighting Plot			
Lighting Designer	Martin Berglund	Lighting Designer	Maria Sjöström
Cell	+46 (0)708 308354	Cell	+46723 515269
Revision number	1	Wyg Design	Martin Berglund
Revision Date	26/10/22		
Printed By	Martin Berglund	Print date	26/10/22
		File	Kuben_TechSpec_221007_R49.w

Kuben_Patch_Conventionals

(All Layers)

27/10/22

Venue: Malmö Live Kuben
Show: Lighting Plot

Designer: Martin Berglund
Assistant: Maria Sjöström

Patch	Channel	Dimmer	Type	Position	Unit	Wattage	Purpose
0.00	95	95	CE Source 4 - 15/30 Zoom	Catwalk_SL		750W	Front
1.107	107	107	CE Source 4 - 15/30 Zoom	Catwalk_SR		750W	Front
1.108	108	108	CE Source 4 - 15/30 Zoom	Catwalk_SR		750W	Front
1.109	109	109	CE Source 4 - 15/30 Zoom	Catwalk_SR		750W	Front
1.110	110	110	CE Source 4 - 15/30 Zoom	Catwalk_SR		750W	Front
1.111	111	111	CE Source 4 - 15/30 Zoom	Catwalk_SR		750W	Front
1.112	112	112	CE Source 4 - 15/30 Zoom	Catwalk_SR		750W	Front
1.113	113	113	CE Source 4 - 15/30 Zoom	Catwalk_SL		750W	Front
1.114	114	114	CE Source 4 - 15/30 Zoom	Catwalk_SL		750W	Front
1.115	115	115	CE Source 4 - 15/30 Zoom	Catwalk_SL		750W	Front
1.116	116	116	CE Source 4 - 15/30 Zoom	Catwalk_SL		750W	Front
1.117	117	117	CE Source 4 - 15/30 Zoom	Catwalk_SL		750W	Front
1.161	161	161	CE Source 4 Par	LX2_A	1	575W	Orchestra Downlight
1.161	161	161	CE Source 4 Par	LX2_A	2	575W	Orchestra Downlight
1.162	162	162	CE Source 4 Par	LX2_A	3	575W	Orchestra Downlight
1.162	162	162	CE Source 4 Par	LX2_A	4	575W	Orchestra Downlight
1.163	163	163	CE Source 4 Par	LX2_A	5	575W	Orchestra Downlight
1.163	163	163	CE Source 4 Par	LX2_A	6	575W	Orchestra Downlight
1.164	164	164	CE Source 4 Par	LX2_A	7	575W	Orchestra Downlight
1.164	164	164	CE Source 4 Par	LX2_A	8	575W	Orchestra Downlight
1.165	165	165	CE Source 4 Par	LX2_A	9	575W	Orchestra Downlight
1.165	165	165	CE Source 4 Par	LX2_A	10	575W	Orchestra Downlight
1.166	166	166	CE Source 4 Par	LX2_A	11	575W	Orchestra Downlight
1.166	166	166	CE Source 4 Par	LX2_A	12	575W	Orchestra Downlight
1.167	167	167	CE Source 4 Par	LX3_A	1	575W	Orchestra Downlight
1.167	167	167	CE Source 4 Par	LX3_A	2	575W	Orchestra Downlight
1.168	168	168	CE Source 4 Par	LX3_A	3	575W	Orchestra Downlight
1.168	168	168	CE Source 4 Par	LX3_A	4	575W	Orchestra Downlight
1.169	169	169	CE Source 4 Par	LX3_A	5	575W	Orchestra Downlight
1.169	169	169	CE Source 4 Par	LX3_A	6	575W	Orchestra Downlight
1.170	170	170	CE Source 4 Par	LX3_A	7	575W	Orchestra Downlight
1.170	170	170	CE Source 4 Par	LX3_A	8	575W	Orchestra Downlight
1.171	171	171	CE Source 4 Par	LX3_A	9	575W	Orchestra Downlight
1.171	171	171	CE Source 4 Par	LX3_A	10	575W	Orchestra Downlight
1.172	172	172	CE Source 4 Par	LX3_A	11	575W	Orchestra Downlight
1.172	172	172	CE Source 4 Par	LX3_A	12	575W	Orchestra Downlight
6.343			Flat Pro 600 Flood IP65	LX1_A1	1	191W	Ambience House Lights
6.352			Flat Pro 600 Flood IP65	LX1_A1	3	191W	Ambience House Lights
6.361			Flat Pro 600 Flood IP65	LX1_A1	6	191W	Ambience House Lights
6.370			Flat Pro 600 Flood IP65	LX1_A1	8	191W	Ambience House Lights
6.379			Flat Pro 600 Flood IP65	LX1_B2	1	191W	Ambience House Lights
6.388			Flat Pro 600 Flood IP65	LX1_B2	2	191W	Ambience House Lights
6.397			Flat Pro 600 Flood IP65	LX1_B2	3	191W	Ambience House Lights
6.406			Flat Pro 600 Flood IP65	LX1_B2	4	191W	Ambience House Lights
6.415			Flat Pro 600 Flood IP65	PA_truss	1	191W	Ambience House Lights
6.424			Flat Pro 600 Flood IP65	PA_truss	2	191W	Ambience House Lights
6.433			Flat Pro 600 Flood IP65	PA_truss	3	191W	Ambience House Lights
6.442			Flat Pro 600 Flood IP65	PA_truss	4	191W	Ambience House Lights
7.1			1M RGBW Ledstructures LED Strip	Wall SR	1	111W	Ambience/FX
7.5			1M RGBW Ledstructures LED Strip	Wall SR	2	111W	Ambience/FX
7.9			1M RGBW Ledstructures LED Strip	Wall SR	3	111W	Ambience/FX
7.13			1M RGBW Ledstructures LED Strip	Wall SR	4	111W	Ambience/FX
7.17			1M RGBW Ledstructures LED Strip	Wall SR	5	111W	Ambience/FX
7.21			1M RGBW Ledstructures LED Strip	Wall SL	1	111W	Ambience/FX
7.25			1M RGBW Ledstructures LED Strip	Wall SL	2	111W	Ambience/FX
7.29			1M RGBW Ledstructures LED Strip	Wall SL	3	111W	Ambience/FX
7.33			1M RGBW Ledstructures LED Strip	Wall SL	4	111W	Ambience/FX
7.37			1M RGBW Ledstructures LED Strip	Wall SL	5	111W	Ambience/FX

Kuben_Patch_Moving

Plot_print

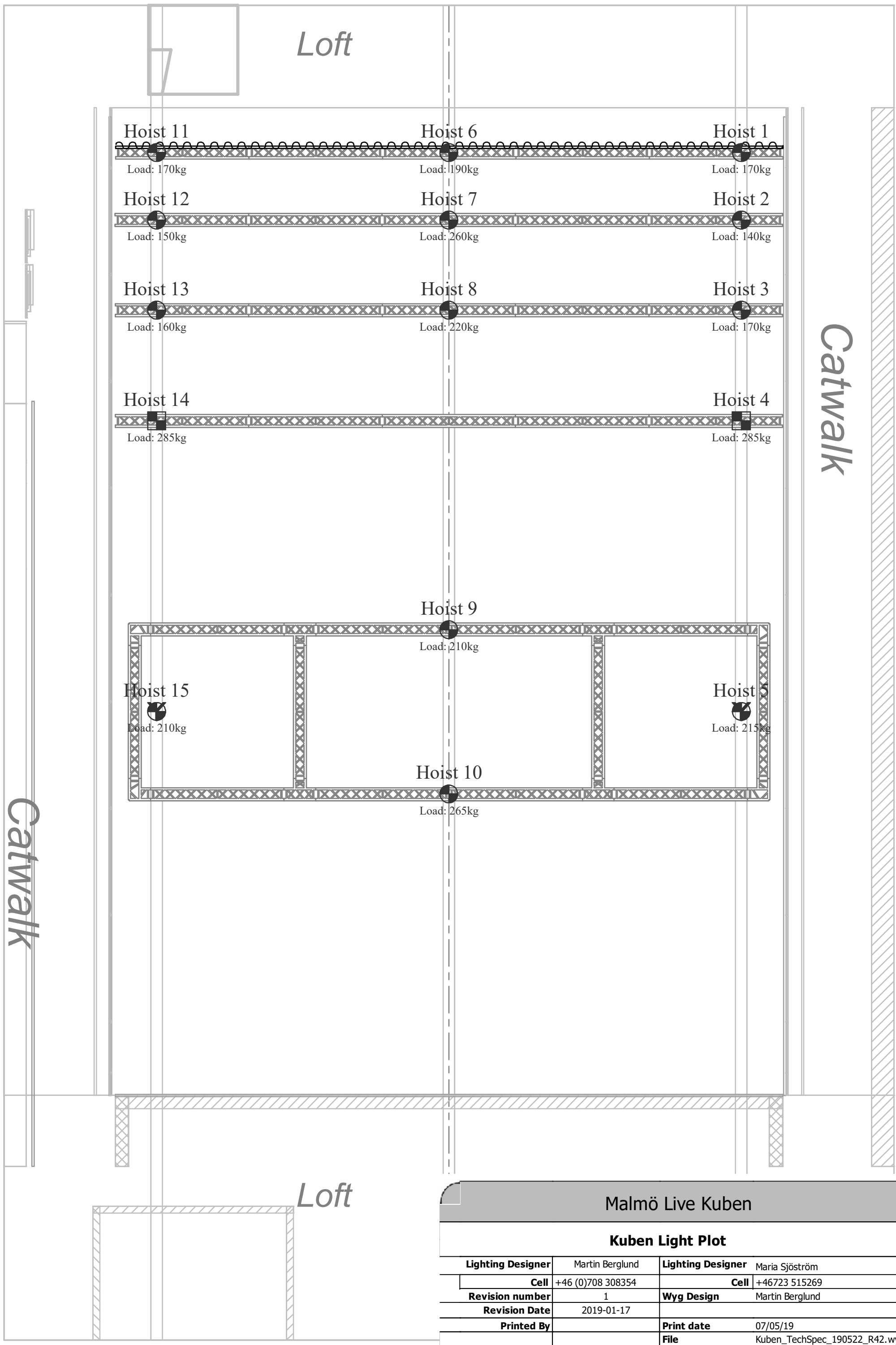
26/10/22

Venue: Malmö Live Kuben
Show: Spinneriet en el Kubo

Designer: Martin Berglund
Assistant: Maria Sjöström

Spot	Patch	Type	Position	Unit	Wattage	Fixture Options	Mode
31	3.330	Alpha Spot QWO	LX3_A	1	1200W	Mode: Vect; LDMX: On; CMY: CMY	Vect
32	3.366	Alpha Spot QWO	LX3_A	1	1200W	Mode: Vect; LDMX: On; CMY: CMY	Vect
33	3.402	Alpha Spot QWO	LX3_A	1	1200W	Mode: Vect; LDMX: On; CMY: CMY	Vect
34	3.438	Alpha Spot QWO	LX3_A	1	1200W	Mode: Vect; LDMX: On; CMY: CMY	Vect
35	4.330	Alpha Spot QWO	LX2_B	1	1200W	Mode: Vect; LDMX: On; CMY: CMY	Vect
36	4.366	Alpha Spot QWO	LX2_B	2	1200W	Mode: Vect; LDMX: On; CMY: CMY	Vect
37	4.402	Alpha Spot QWO	LX2_B	3	1200W	Mode: Vect; LDMX: On; CMY: CMY	Vect
38	4.438	Alpha Spot QWO	LX2_B	4	1200W	Mode: Vect; LDMX: On; CMY: CMY	Vect
41	3.121/	A.leda B-EYE K20	LX3_B	1	750W	Mode: Shapes; Pixel Engine: Disabled	Shapes
42	3.156/	A.leda B-EYE K20	LX3_B		750W	Mode: Shapes; Pixel Engine: Disabled	Shapes
43	3.191/	A.leda B-EYE K20	LX3_B		750W	Mode: Shapes; Pixel Engine: Disabled	Shapes
44	3.226/	A.leda B-EYE K20	LX3_B		750W	Mode: Shapes; Pixel Engine: Disabled	Shapes
45	4.181/	A.leda B-EYE K20	LX2_A	1	750W	Mode: Shapes; Pixel Engine: Disabled	Shapes
46	4.216/	A.leda B-EYE K20	LX2_A		750W	Mode: Shapes; Pixel Engine: Disabled	Shapes
47	4.251/	A.leda B-EYE K20	LX2_A		750W	Mode: Shapes; Pixel Engine: Disabled	Shapes
48	4.286/	A.leda B-EYE K20	LX2_A		750W	Mode: Shapes; Pixel Engine: Disabled	Shapes
400	6.1	P12 Profile	LX1_A1	2	800W	Mode: 1	1
401	6.43	P12 Profile	LX1_A1	4	800W	Mode: 1	1
402	6.85	P12 Profile	LX1_A1	5	800W	Mode: 1	1
403	6.127	P12 Profile	LX1_A1	7	800W	Mode: 1	1
601	6.244	Robin LEDBeam 150	LX1_A2	1	220W	Mode: 1; Speed: mSpeed Speed	1
602	6.266	Robin LEDBeam 150	LX1_A2	2	220W	Mode: 1; Speed: mSpeed Speed	1
603	6.288	Robin LEDBeam 150	LX1_B1	1	220W	Mode: 1; Speed: mSpeed Speed	1
604	6.310	Robin LEDBeam 150	LX1_B1	2	220W	Mode: 1; Speed: mSpeed Speed	1

15m
14m
13m
12m
11m
10m
9m
8m
7m
6m
5m
4m
3m
2m
1m
0m
1m
2m
3m
4m
5m
6m
7m
8m
9m
10m
11m
12m
13m
14m
15m



Malmö Live Kuben

Kuben Light Plot

Lighting Designer	Martin Berglund	Lighting Designer	Maria Sjöström
Cell	+46 (0)708 308354	Cell	+46723 515269
Revision number	1	Wyg Design	Martin Berglund
Revision Date	2019-01-17	Print date	07/05/19
Printed By		File	Kuben_TechSpec_190522_R42.w

Rigging Points Load

(All Layers)

07/05/19

Venue: Malmö Live Kuben

Designer: Martin Berglund

Show: Kuben

Assistant: Maria Sjöström

Combined report

Name	Position	Type	Capacity	Load
Bridle:				
Hoist 1	Backdrop	Lighting	500.00kg	170.00kg
Hoist 6	Backdrop	Lighting	500.00kg	190.00kg
Hoist 11	Backdrop	Lighting	500.00kg	170.00kg
Hoist 2	LX3	Lighting	500.00kg	140.00kg
Hoist 7	LX3	Lighting	500.00kg	260.00kg
Hoist 12	LX3	Lighting	500.00kg	150.00kg
Hoist 3	LX2	Lighting	500.00kg	170.00kg
Hoist 8	LX2	Lighting	500.00kg	220.00kg
Hoist 13	LX2	Lighting	500.00kg	160.00kg
Hoist 4	PA_truss	Audio	500.00kg	285.00kg
Hoist 14	PA_truss	Audio	500.00kg	285.00kg
Hoist 9	LX1_B	Lighting	500.00kg	210.00kg
Hoist 10	LX1_A	Lighting	500.00kg	265.00kg
Bridle: Yes				
Hoist 5	LX1_A+B	Lighting	500.00kg	215.00kg
Hoist 15	LX1_A+B	Lighting	500.00kg	210.00kg